



S'more News

FALL 2013

Fall Registration is in full swing!

Have you ever been so excited about trying something for the first time that you could just scream? Do you know that feeling when you go to bed and can't wait for the next day's adventure? With us you'll have a lot more of those days. We'll show you ways can you do all the things you can't wait to do!

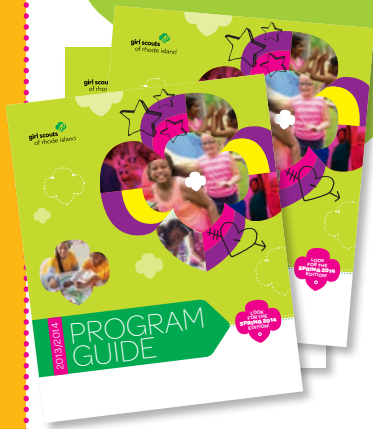
The Girl Scout program offers incredible opportunities for girls to grow in their leadership skills, develop lifelong friendships, and earn awards. Girls discover who they are and what they value, connect with others and take action to make the world a better place.

Parents, you can join in on the Girl Scout journey with your daughter! Sign up today to be a volunteer leader – short-term and flexible positions are available.

What are you waiting for? Sign up today!

The annual membership fee is \$25, and financial assistance is available.

your 2013-2014 PROGRAM GUIDE has arrived!



Check your mailbox or our website www.gsri.org for the full Program Guide!

THE PROGRAM GUIDE is packed with something for everyone - whether you want to try a new activity, increase your skill in something you've tried before, meet new friends, or go with your entire troop. Did you discover a passion for horseback riding at camp this summer? Or maybe your friends told you how much fun they had canoeing, and now you want to try. Do you dream of being the next American Idol? Do you like experimenting, using computers, or getting creative? Whatever you want to do, there's a program for you!

Parents: Think of programs as Girl Scout Extracurriculars. Each program is designed so that your daughter can do the Girl Scout stuff she wants to do, with whomever she wants to do it! Unless a program is labeled "Troop Pathway", she can try new activities on her own or with friends. If a friend isn't currently registered as a Girl Scout, it's easy to become a member. Mail in or fax the registration form from the Program Guide, or sign up on our website - www.gsri.org.

It's easy to sign up, but make sure you do it **FAST**, as space is limited & before time runs out!

- F**ind your age level & a couple of programs that seem fun
- A**sk your parent to sign you up
- S**hare the news with your friends & troop - they might want to do it too!
- T**ry something new & look forward to lots of fun!

Have questions? Contact our registrars at (401) 331-4500 or (800) 331-0149.



Heart & Hope Fund's Executive Director Louise Dinsmore and Board Members Ron Cascione, Nancy Aguiar, and Christopher Plant, received the check from Ginger Lallo, GSRI Director of Product Sales and several Girl Scouts in July.

Gabrielle Dinsmore Heart & Hope Fund Check Presentation



GSRI presented a check in the amount of \$6,415.21 to the Gabrielle Dinsmore Heart & Hope Fund. This check represented contributions from troops from their Cookie Sale proceeds towards this year's council service project. "Being selected as the Service Project of the Year from the Girl Scouts of Rhode Island, a distinguished one hundred year old organization, to support our mission is a testament to the important work we are doing in our local community to make a difference," said Dinsmore. The mission of the Heart & Hope Fund is to provide educational, recreational, financial and emotional support to children and families living in RI, MA, and CT who are impacted by congenital heart disease, heart defects and severe feeding issues.



We Have Moved!

We have moved! In May, we packed boxes, shared memories, and said goodbye to the Canal House, which had been our home since 1974. The new headquarters in Warwick is easier to access with more parking, and best of all, has much more space for girls and volunteers to enjoy!

NEW ADDRESS:

500 Greenwich Ave. Warwick, RI 02886
All staff phone numbers and email addresses have remained the same

Volunteer Spotlight

Kat Waterhouse wanted to join Girl Scouts when she was a first-grader in Maine, but there was not a leader available, so she started her Girl Scout journey in second grade. Since then, she has realized the value of volunteer leaders in Girl Scouts, and transitioned from being a girl member to leading of troop herself. Part of that transition included co-leading a Daisy troop with two of her classmates during her senior year of high school. Kat started leading her current troop in 2005 and has watched the girls grow from Brownies to Seniors. She has been involved with Girl Scouting for 25 years, and is now a lifetime member.



Kat with her Mom, who was visiting for the 100th Anniversary celebration at Waterfire in Providence.

Besides Girl Scouts, Kat has another passion: rock climbing. “My interest started when I was two or three years old, going on rock climbing trips with my Dad. When I moved back to Rhode Island in 2005, it reignited my interest.”



Kat during a camping trip at Hoffman last year.

She started her career at Rock Spot Climbing (then RI Rock Gym) in 2007 as part time floor staff, and now works full-time as Marketing & Events manager. Her advice to girls who want to climb up the “ladder” within a company? “Make yourself available, be willing to get trained and learn something new to constantly increase your knowledge.” Kat also believes that anyone who wants to, can turn what they like to do, no matter what it is, into a living. “You just have to think outside the box,” she says.

In Kat’s current role, she is the social media “queen” and advises girls who want to work in marketing to “read blogs and articles, know that social media is constantly changing, and be aware of all that is going on.”

Rock Spot Climbing offers a variety of programs, including a Climbing Adventure Party, Adventure Sports Program for Juniors, and an overnight Climbing Slumber Party – all just for Scouts! For more information, or to book a rock climbing adventure, troops in South County can email James@rockspotclimbing.com, and troops in northern Rhode Island/MA can contact Kris at K.Kearney@rockspotclimbing.com.



Grand Opening Celebration, featuring Anna Maria Chávez!

Anna Maria Chávez, GSUSA CEO, visited Rhode Island for the first time in June, and what a whirl-wind two days it was! She took the time to meet with volunteers, girls, staff, Board members, friends and family – thank to you to everyone who joined us!

Besides helping to officially open our headquarters during a ribbon cutting ceremony, Ms. Chávez also spoke at a press



conference to announce the results of our six-month project to create a vision for our new **Girl Leadership Experience**

Center, located in 10,000 square feet in the lower level of the new building.



Our Leadership Center Visioning Task Force helped us hone in on six areas of excellence that will be integrated into all of our efforts going forward – both in the Center and via programs conducted in the communities we serve. We’ll partner with the best and the brightest

individuals, organizations and institutions to deliver exciting and high-quality programming for girls in the following broad categories:

- ✳ STEAM (Science, Technology, Engineering, Art and Math)
- ✳ Making a Difference
- ✳ Life Skills
- ✳ Travel and Adventure
- ✳ Camping and Outdoor Skills
- ✳ Global Citizenship

A summary of the task force’s report is in our website, and we look forward to keeping you updated on our progress toward this exciting vision for our council!



GOLD AWARD WINNERS



SILVER AWARD WINNERS



ATTLEBORO TROOP #4993



PAWTUCKET TROOP #388

Celebrating: Gold, Silver & Bronze

Seventeen of the brightest young women shone on Saturday, June 1 as they received the highest achievement and most prestigious award in Girl Scouting - the Gold Award. The ceremony, during which 2012 Silver Award recipients were recognized with a special salute, was held at Rhodes on the Pawtuxet. The second annual **Young Women of Distinction Awards** were also presented to three Girl Scout Gold Award recipients whose projects were selected based on creativity, sustainability, and impact. Runners-up **April Harff**, who created "Project SAAF (Stop Assault Against Females)", a sexual violence awareness campaign, and **Alison Jeffrey**, who introduced residents of the Women's Center of Rhode Island to living a healthy lifestyle through her project, "Healthy Growing", each received a \$500 scholarship. **Lindsay Gimple**, who created an "Oceans of Awareness" project to help educate children about the local marine environment, was honored with the top award and received a \$1,000 scholarship.

Two troops have started on the path to follow in their older Girl Scout sisters footsteps by earning the Bronze Award:

Attleboro Girl Scout Troop #4993 completed their Bronze Award this June by focusing on raising awareness about cancer. They performed an inspiring skit and helped cancer survivors at the North Attleboro Relay for Life event on June 21.

Several members of **Pawtucket Troop #388** earned the Bronze Award by collecting food to replenish the food pantry at Holy Family Church after it was broken into. Under the leadership of Dawn Robitaille and assistant leader Kim De Mayo, troop members also received patches from several trips they took during the year and performed the "12 Days of Camping" at a ceremony in Slater Park held in June.

Day is done, gone the sun...

Girls at overnight camp Hoffman and all four day camps stayed cool in this summer's heat!



A new mobile rock wall, which traveled between day camps **COOKIE**, **ROCKY FARM** and **PROMISING ACRES**, was a hit at camp this summer! Girls were able to choose from an easy, medium or hard climb and challenged themselves, overcame fear and gained confidence.



Girls at **CAMP HOFFMAN** sailed across Larkin Pond and loved splashing down the new waterslide. Even Camp Director Tinkerbell had a turn!

Campers at **GREEN FOREST** enjoyed having picnics and performing talent shows under the shade of trees at Gypsy's Rest, scavenger hunts, and even had an all-camp game of sock wars under the new mist tower!

At **CAMP PROMISING ACRES**, girls perfected their strokes in a beautiful full-size in-ground swimming pool.

After starting each morning by seeing all of their friends at morning song, girls at **CAMP COOKIE** had a blast swimming, paddle boating and canoeing in the pond.



Greetings from the CEO

What a busy summer it has been! After welcoming GSUSA CEO Anna Maria Chávez for her first ever visit to Rhode Island, officially opening the new headquarters with a ribbon cutting ceremony, and another successful camp season, it's hard to believe that when you receive this edition of S'More news, students will be starting a new school year.

Here at GSRI, our new year kicked off in August with a meeting and training for a group of dedicated volunteers - service team members. Speaking of volunteers, as troops begin meeting this fall, none of the programs we offer would be available without the tireless work of leaders - thank you for working hard to ensure fun, quality and safe programs are always available for girls!

Whether your daughter wants to visit the magical world of fairies, meet a ballerina, solve a mystery at camp, travel to Europe, or learn digital

photography skills - whatever it is your daughter can't wait to do - this year's program guide has endless possibilities. We are also excited to share with you our vision for the lower level of the new building - it is a blank slate for girls and volunteers to turn into their space. Register today to make sure your daughter doesn't miss out on the fun!

Do you want to witness first-hand the joy on your daughter's face as she discovers something new? Volunteering is the perfect way to go on the Girl Scouting journey together. If you have a busy schedule, one-time and short-term volunteer roles are available. Thank you in advance for turning your daughter's "I can't wait to..." into an "I can't believe I did."


Jean Ann McGrane, CEO



FALL PRODUCT SALE!

We are buzzzzzzing with excitement as we invite girls of all ages and in all pathways to participate in our Fall Product Sale Program.

Through the sale of magazine subscriptions, candy and nuts, girls learn how to make decisions, set goals, develop people skills, manage money, build self-confidence and work as a team, all while having fun!

Girls can earn proceeds for troop activities, which troops can use as start-up funds for a fun new year! The sale of these products to family and friends also benefit the many services, programs and events that are offered by the council each year.

The products make great gifts & will be delivered in time for the holiday season!

What's up for grabs?

Troops can earn **\$1.50 for each magazine subscription** sold and **\$2.00 for each paper address booklet** that is completed. Please be sure to submit addresses of your family and friends only! To make taking orders even easier, magazine subscriptions can be placed online. Just print out order confirmations and submit them with the rest of your orders by the October 27 deadline, and you'll receive proceeds just like paper orders! Troops will earn **\$1.00 for every Candy/Nut** item that they sell. These items need to be paid for when the order is taken (checks payable to GSRI).

One of the cool rewards pictured here can be yours - simply sell at least two magazine subscription orders or more than five candy and nut items!

Girls in Cadette troops and older and opt out of rewards and receive **additional troop profits** of .15 cents for each candy/nut item sold or .25 cents extra per magazine subscription.

Troops who have 100% participation in both sales, with a per girl average of at least 5 magazine subscriptions, a completed paper address booklet, and a completed internet activity and email address booklet, along with 20 candy/nut items, will be entered into a drawing to win a **\$50.00 Gift Certificate to the Council Girl Scout Shop!**

Added bonus for leaders from troops who qualify for the 100% participation drawing will be eligible to win one of forty **fabulous duffle bags loaded with great gifts!**

The top 15 girl sellers will receive a pass for themselves and a guest to attend a **skating party at the Providence Skating Center** on January 10, 2014. Thanks to the Providence Skating Center for this generous donation!

Visit www.whatcanagirldo.com to check out fun games and activities!

Questions? Contact the Product Sales Coordinator within your Service Unit, call GSRI at (401) 331-4500 or visit www.gsri.org.

PRODUCT SALES REWARDS:



← Collapsible Water Bottle w/ Carabiner

Goal Achiever Patch →



Eraser Toppers

Small Plush Bee →



Glitter Tattoo & Face/Body Paint

← Mini Locker

Large Plush Bee →



Stickerzine Album

Double Sided Theme Bag ↓



← Wrist Rox Bracelet Bead Tote



IMPORTANT DATES TO REMEMBER:

September 3-October 27 Girls take orders for magazines and candy/nuts

October 28 Orders due to your Troop Leader

November 20-22 Candy-n-Nuts delivered to participating Service Units; girls then begin to deliver product


girl scouts
 of rhode island
 500 Greenwich Avenue
 Warwick, RI 02886
 www.gsri.org


S'more News
 FALL 2013

GIRL SCOUTS OF RHODE ISLAND, INC.
 Including Attleboro, Bellingham, Blackstone, Fall River,
 Milville, North Attleborough, Plainville, Rehoboth,
 Seekonk, Somerset, Swansea, Westport, and
 Wrentham, MA and Pawcatuck, CT

Nonprofit
 Organization
 U.S. Postage
 PAID
 Providence, RI
 Permit No. 220


ASK LOUISE!

Frequently asked questions
 at the Girl Scout Shop!

*** I AM A NEW LEADER. WHAT DO I NEED?**

Thank you for volunteering! If you are a new leader, or if girls in your troop have recently bridged to a new level, The Adult Resource Pack has all you need to guide and inspire girls as you begin your year. The pre-pack includes:

- 1 The Guide to Girl Scouting (available for each age level)
- 2 Adult Insignia Tab
- 3 Official Girl Scout Membership Pin
- 4 WAGGGS Official Pin and new Official Volunteer Pin

Pair all of this with an Adult Guide/Journey Book Set, and you'll receive a FREE Girl Scout Bag – a \$14.00 value!



*** MY DAUGHTER/NIECE/ GRANDDAUGHTER WON'T BE OLD ENOUGH TO JOIN DAISIES FOR A FEW YEARS. DO YOU HAVE ANYTHING SO SHE CAN SHOW HER GIRL SCOUT SPIRIT?**

For our youngest friends, we have "Future Girl Scout" Infant Bibs, Onesies and Toddler T-Shirts – all in the perfect pink color for the little girls in your life!



*** COME INTO THE STORE TO SEE SPECIALS AND CLEARANCE ITEMS!**

Visit the shop for all of your official Girl Scout uniform needs, including new white polo shirts – available with a stylish shorthand logo for each age level.



GIRL SCOUT SHOP

500 Greenwich Ave, Warwick, RI
HOURS:
 Monday-Friday, 9am-5:30pm
 Saturday, 10am-3pm

FRIENDSHIP SHOP

Camp Hoffman, W. Kingston, RI
HOURS:
 Wednesday & Saturday, 10am-2pm

Please check our website for varying hours during inventory in September and the holiday season.

Major credit cards accepted. Free parking at both locations.
 (401) 331-4500 or (800) 331-0149 ext. 1201

We would like to thank our sponsors:



EW Burman